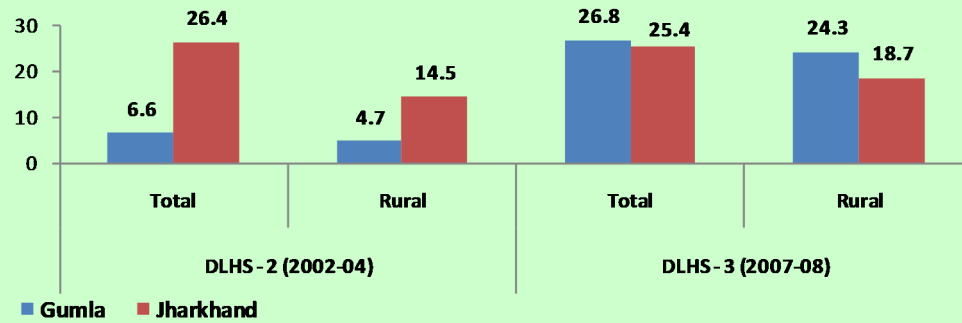
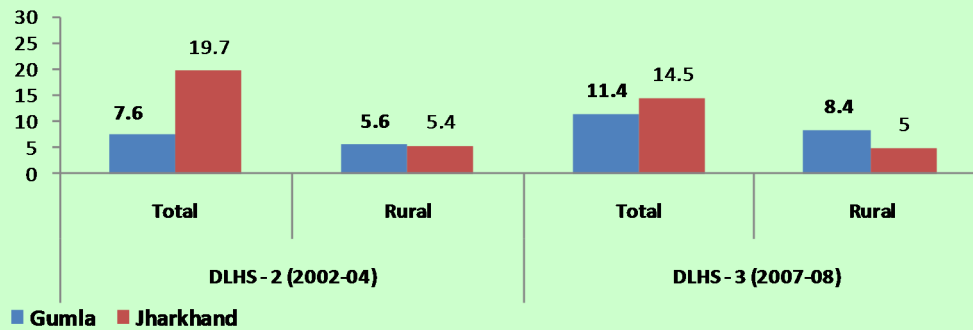


Married women heard of HIV/AIDS (%)

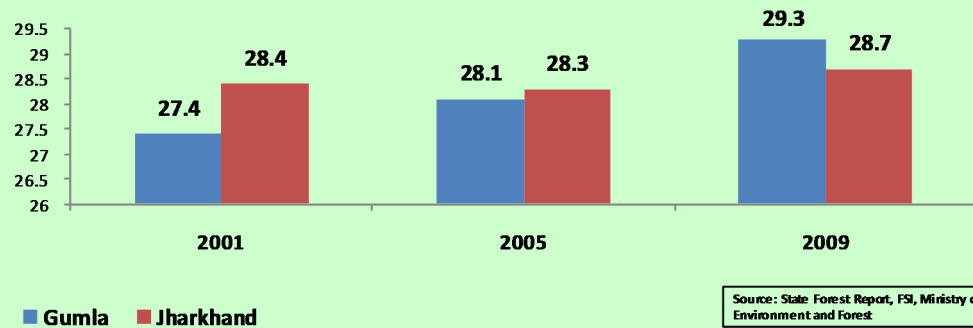


Ensure Environmental Sustainability

Have Access to toilet facility (%)



Forest Coverage (%)



For more detail, please contact

District Planning & Monitoring Unit (DPMU)
Collectorate Building (D.C. Office), Gumla, Jharkhand.

Gumla



Fact sheet on key indicators in Gumla district

Published by
District Administration, Gumla, Jharkhand
(with technical support from UNICEF)

Background

Name of the District: Gumla
Year of Establishment: 1983

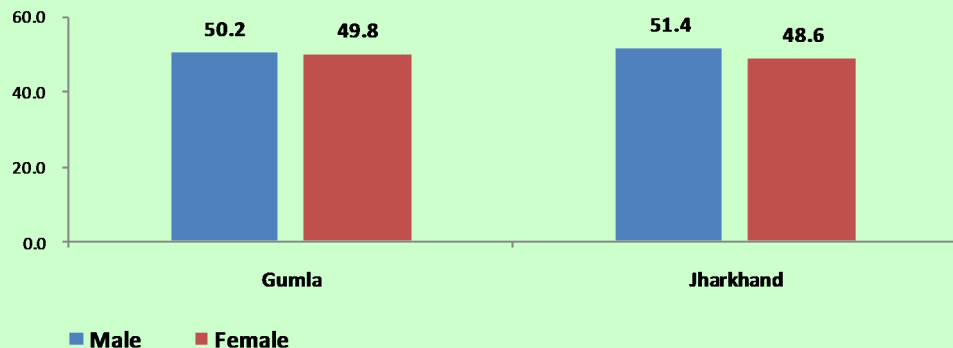
Administrative Set up:

Area (in sq. km.)	5327
Block	12
Panchayat	159
Villages	948

Demography

Indicators	Gumla	Jharkhand
Total Population	10,25,656	3,29,66,238
Male	514730	1,69,31,688
Female	510926	1,60,34,550
Population Density (persons per sq. km.)	193	414
Sex Ratio (Female per 1000 Male)	993	947
Growth Rate (2001—2011)	23.21	22.34
Child population 0-6 years	168241	52,37,582
Child Sex Ratio (0—6 years)	955	943
Child proportion to Total Population	16.40	15.89
Literacy Rate (2011)		
Total	66.92	67.63
Male	76.87	78.45
Female	56.97	56.21

Population by Sex (%)

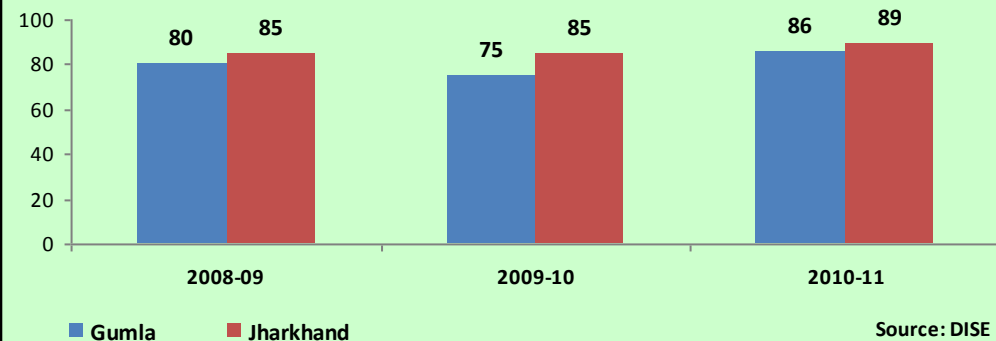


Source: Census 2011 (Provisional Data)



Achieve Universal Primary Education

Net Enrolment Ratio (primary level)

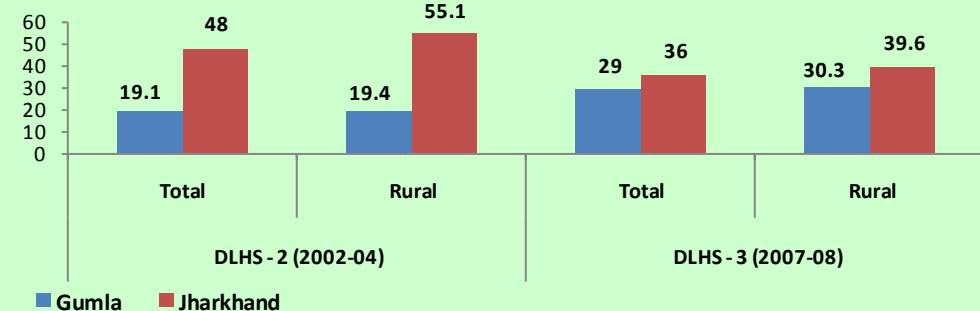


Gender Equality and Empower Women

Gender Parity Index (primary level)



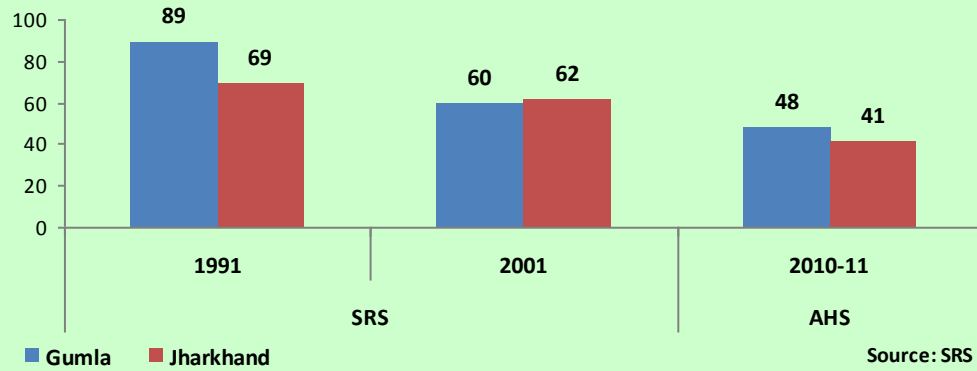
Girl's marrying before completing 18 years (%)



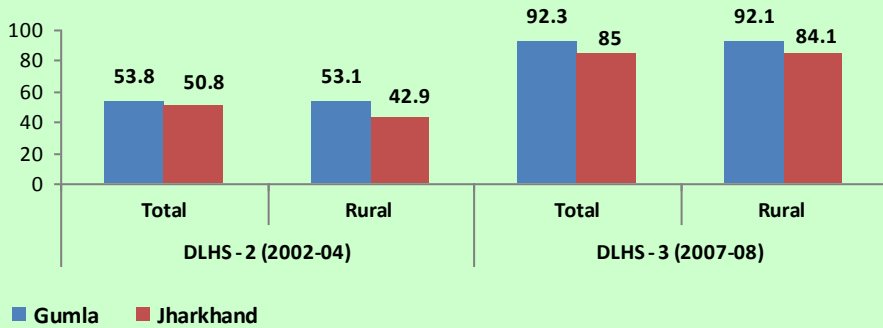


Reduce Child Mortality

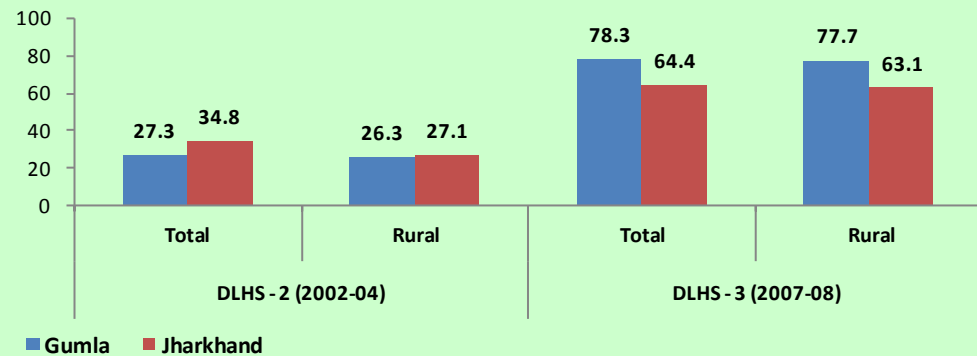
Infant Mortality Rate (Total)



Children (12-23 months) who have received BCG Vaccine (%)

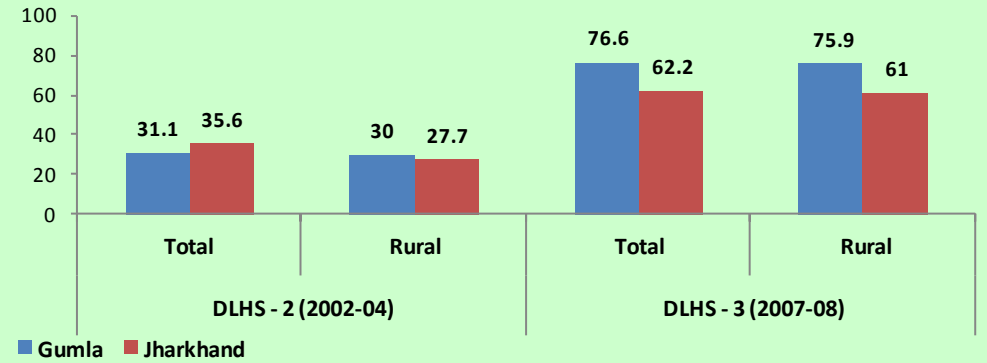


Children (12-23 months) who have received 3 doses of Polio Vaccine (%)

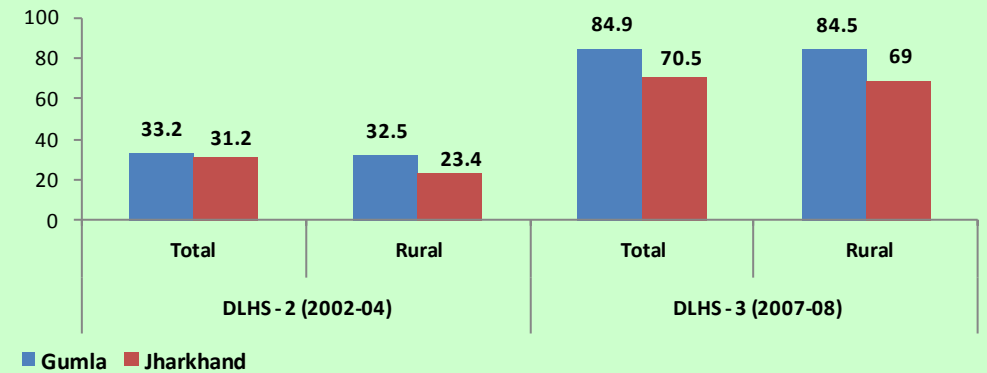


Reduce Child Mortality

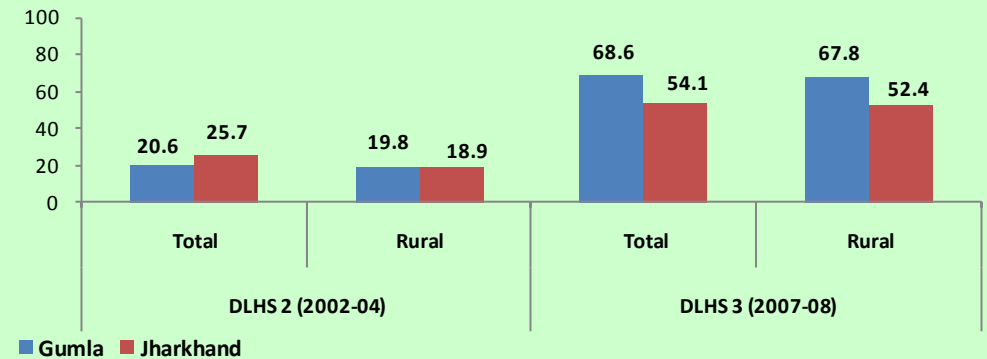
Children (12-23 months) who have received 3 doses of DPT Vaccine (%)



Children (12-23 months) who have received Measles Vaccine (%)



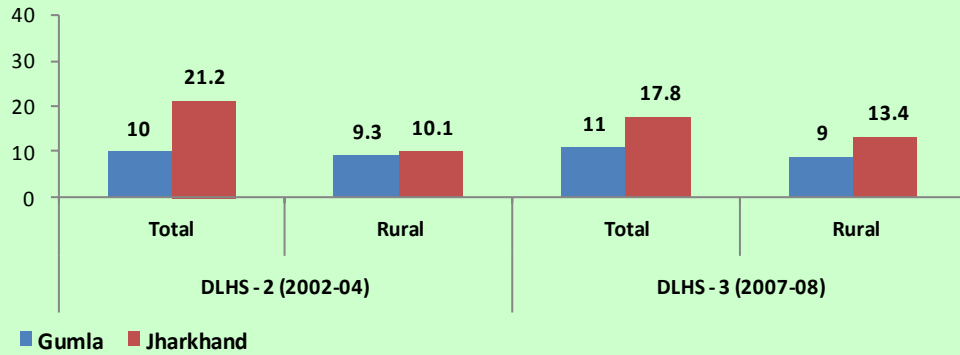
Children (12-23 months) fully immunized (%)



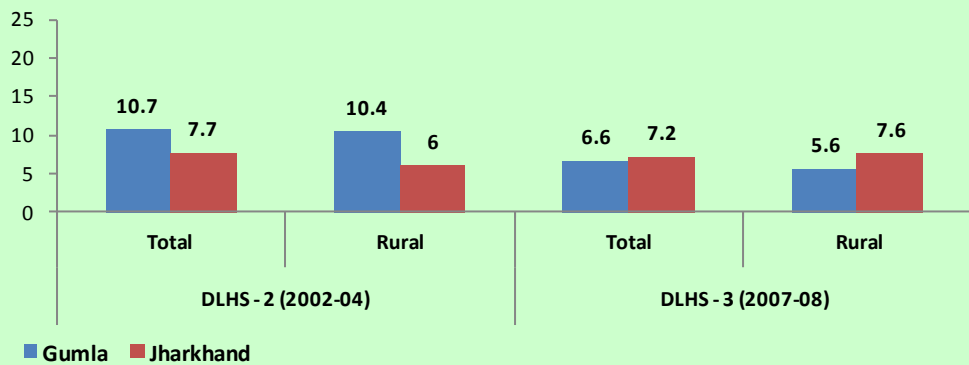


Improve Maternal Health

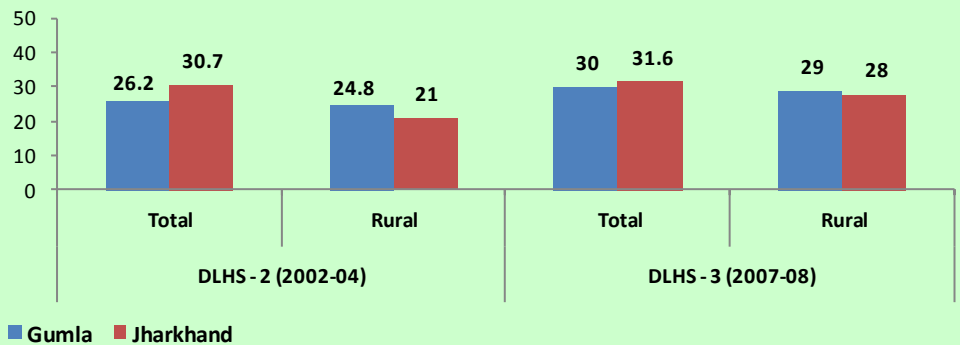
Institutional Delivery (%)



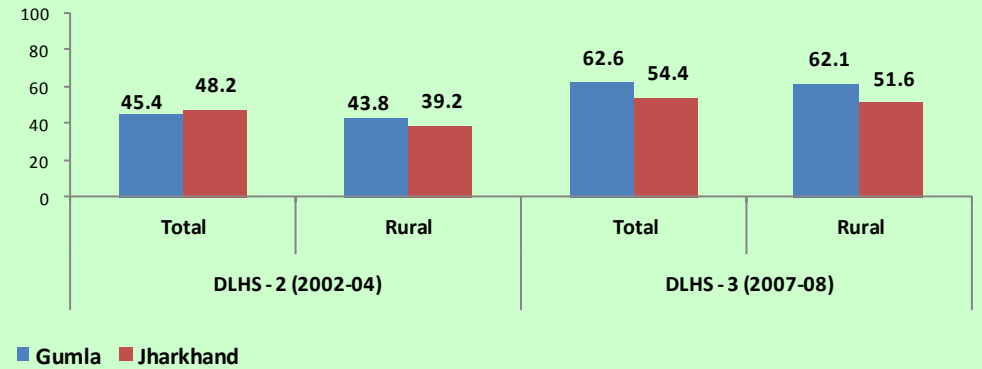
Delivery at home & other places assisted by a doctor/nurse /LHV/ANM (%)



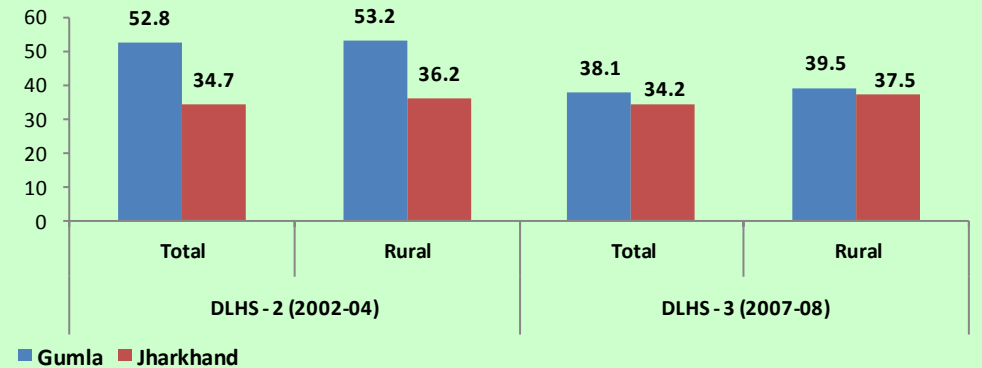
Mothers having at least 3 Ante-Natal care visits during the last pregnancy (%)



Mothers who got at least one TT injection when pregnant with last live / still birth (%)

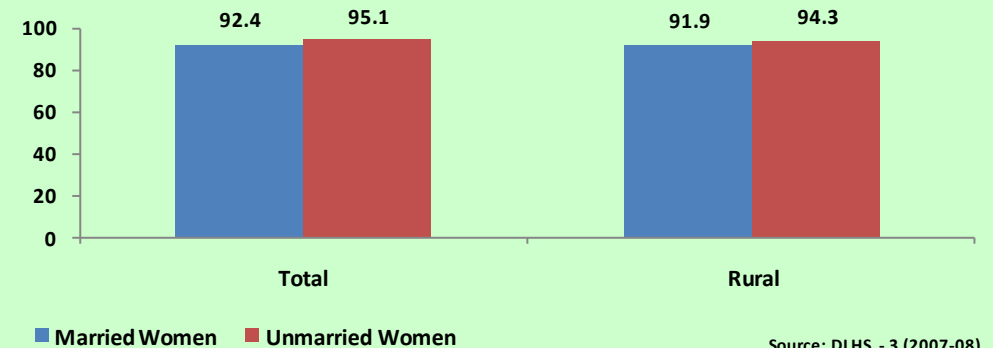


Total Unmet Need (%)



Combat HIV/ AIDS, Malaria and Other Diseases

Women having correct knowledge of HIV/AIDS (%)



Source: DLHS - 3 (2007-08)